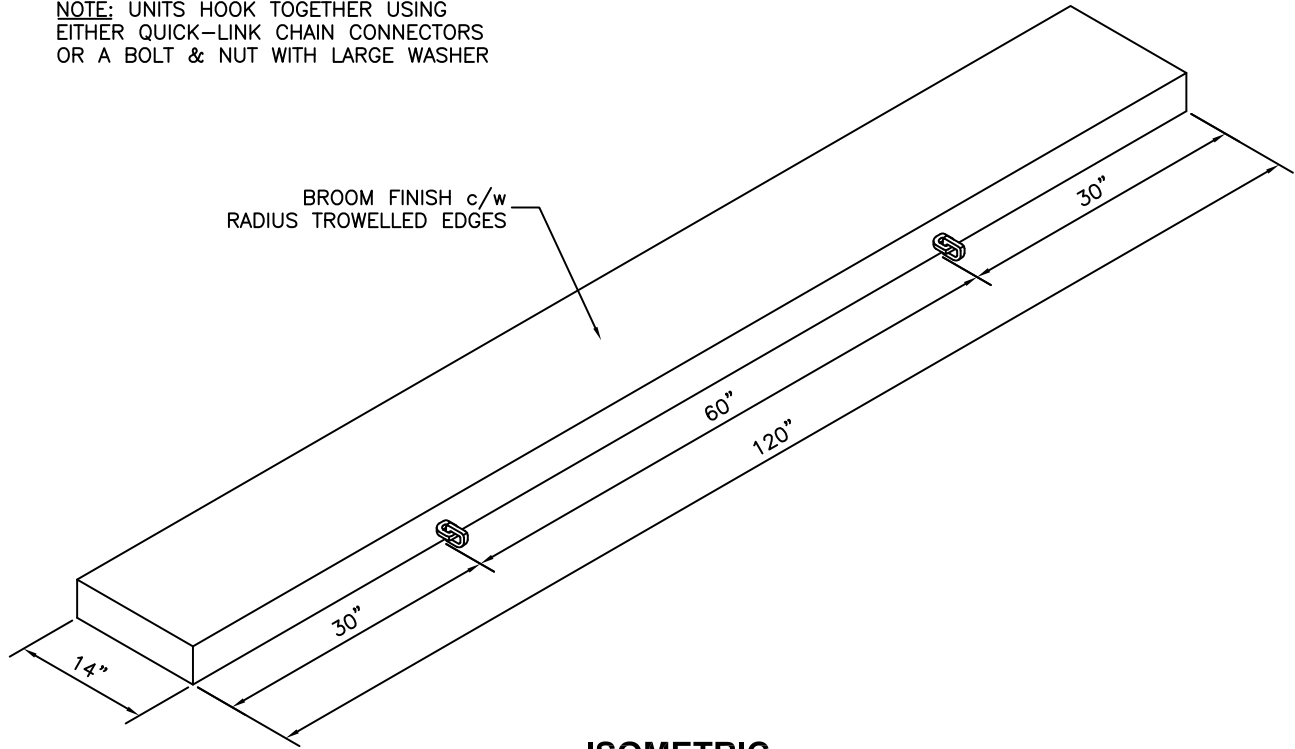
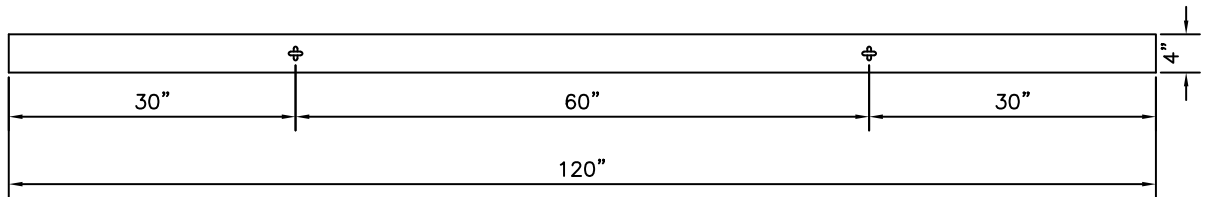


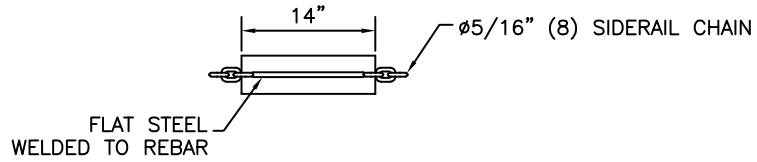
NOTE: UNITS HOOK TOGETHER USING
EITHER QUICK-LINK CHAIN CONNECTORS
OR A BOLT & NUT WITH LARGE WASHER



ISOMETRIC



SECTION



SECTION

NOTES:

1) 27.6 MPa @ 28 DAYS

REVISED: MAR 10 2005



KON KAST
products (2005) Ltd.
"Committed To Quality And Service"

3440 UNIVERSITY WAY
KELOWNA B.C.
V1V 1V9
PH: (250)765-1423
FX: (250)765-0820

BY: PKR

DATE: MAR 10 05

SCALE: NTS

BOAT LAUNCHING PAD

ITEM NO.

1418